

## Recombinant S100 Calcium Binding Protein A9 (S100A9)

Catalog No.: TP08942

50µg

### Sequence Information

**Species:** Rat

**Gene ID:**94195

**Swiss Prot:**P50116

**Synonyms:**MRP14; MIF; 60B8AG; CFAG; NIF;  
CAGB; CGLB; L1AG; P14; Calgranulin  
B; Migration inhibitory factor-related  
protein 14; Calprotectin L1H subunit;  
Leukocyte L1 complex heavy chain

**Residues:**Met1~Lys113

MAAKTGSQLERSISTIINVFHQYSRKYGHPDTLNKAEFKEMVKNKDLPNFLKREK  
RNENLLRDIMEDLDTNQDNQLSFEECMMLMGKLI FACHEKLHENNPRGHDHSHG  
KGGCK

### Product Information

**Source:** Prokaryotic expression.

**Host:** *E. coli*

**Tags:** N-terminal His Tag

**Subcellular Location:** Membrane, Secreted, Cytoplasm.

**Purity:** >95%

**Traits:** Freeze-dried powder

**Buffer formulation:**PBS, pH7.4, containing 0.1% SKL, 5% Trehalose.

**Original Concentration:** 200µg/mL

**Applications:** Positive Control; Immunogen; SDS-PAGE; WB.

(May be suitable for use in other assays to be determined by the end user.)

**Predicted isoelectric point:** 7.6

**Predicted Molecular Mass:** 14.4kDa

**Accurate Molecular Mass:** 15kDa as determined by SDS-PAGE reducing conditions.

### [ USAGE ]

Reconstitute in ddH<sub>2</sub>O to a concentration of 0.1-0.5 mg/mL. Do not vortex.

### [ STORAGE AND STABILITY ]

**Storage:** Avoid repeated freeze/thaw cycles.

Store at 2-8°C for one month.

Aliquot and store at  $-80^{\circ}\text{C}$  for 12 months.

**Stability Test:** The thermal stability is described by the loss rate. The loss rate was determined by accelerated thermal degradation test, that is, incubate the protein at  $37^{\circ}\text{C}$  for 48h, and no obvious degradation and precipitation were observed. The loss rate is less than 5% within the expiration date under appropriate storage condition.

## [ IDENTIFICATION ]

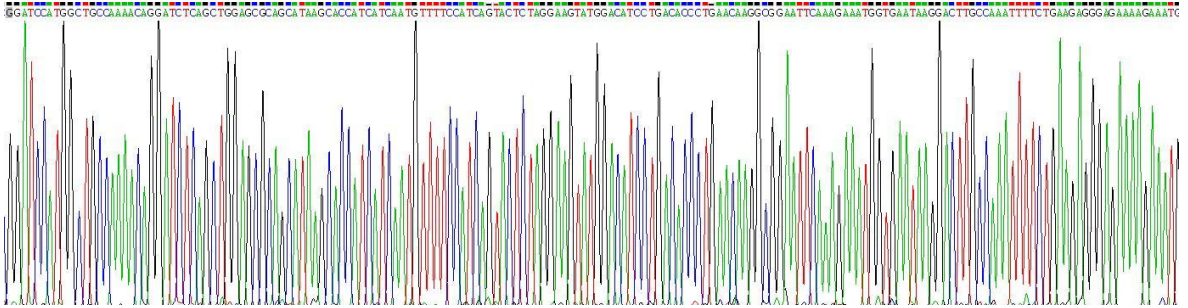


Figure 1. Gene Sequencing (Extract)

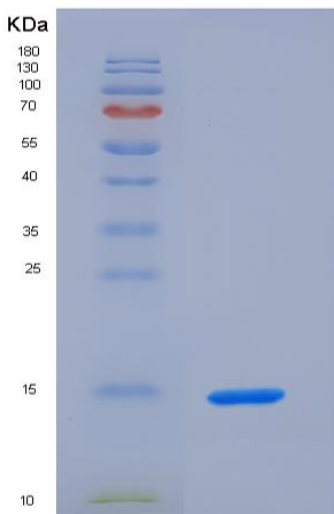


Figure 2. SDS-PAGE

## [ IMPORTANT NOTE ]

The kit is designed for in vitro and research use only, we will not be responsible for any issue if the kit was used in clinical diagnostic or any other procedures.