

Polyclonal Antibody to Nuclear Factor, Erythroid Derived 2 Like Protein 2 (NRF2)

DPA04037 100ul

[PROPERTIES]

Source: Polyclonal antibody preparation

Host: Rabbit

Purification: Recombinant Protein affinity chromatography.

Traits: Liquid

Concentration: 500ug/ml

Ig Isotype:IgG

UOM: 100μl

Cross Reactivity: Human;Mouse.

Applications: WB, IHC, ICC/IF, FC;Elisa.

[IMMUNOGEN]

Immunogen: A synthetic peptide of human Nrf2.

[APPLICATIONS]

Western blotting: 0.5-2μg/mL;

Immunohistochemistry: 5-20μg/mL;

Immunocytochemistry: 5-20μg/mL;

Optimal working dilutions must be determined by end user.

[FORMULATION]

Form & Buffer: Supplied as solution form in 0.01M PBS, pH7.4, containing 0.05% Proclin-300, 50% glycerol.

[STORAGE AND STABILITY]

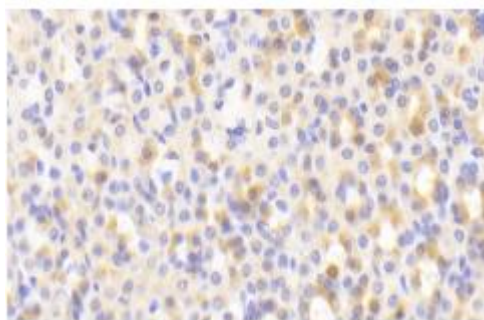
Storage: Avoid repeated freeze/thaw cycles.

Store at 4°C for frequent use.

Aliquot and store at -20°C for 12 months.

Stability Test: The thermal stability is described by the loss rate. The loss rate was determined by accelerated thermal degradation test, that is, incubate the protein at 37°C for 48h, and no obvious degradation and precipitation were observed. The loss rate is less than 5% within the expiration date under appropriate storage condition.

[**IDENTIFICATION**]



DAB staining on IHC-P;

Samples: Rat Stomach Tissue;

[**IMPORTANT NOTE**]

The kit is designed for research use only, we will not be responsible for any issue if the kit was used in clinical diagnostic or any other procedures.