



## Polyclonal Antibody to Phosphoenolpyruvate Carboxykinase 1, Soluble (PCK1)

PA13049 100ul

### **[ PROPERTIES ]**

**Source:** Polyclonal antibody preparation

**Host:** Rabbit

**Purification:** Antigen-specific affinity chromatography followed by Protein A affinity chromatography.

**Traits:** Liquid

Concentration: 0.5mg/ml

Ig Isotype:IgG

**UOM:** 100μl

**Cross Reactivity:** Human,Mouse,Rat

**Applications:** WB.

### **[ IMMUNOGEN ]**

Immunogen: Recombinant PCK1 (Asp311~Ile559) expressed in E.coli.

### **[ APPLICATIONS ]**

**Western blotting:** 0.01-2μg/mL;

Optimal working dilutions must be determined by end user.

### **[ FORMULATION ]**

**Form & Buffer:** Supplied as solution form in 0.01M PBS, pH7.4, containing 0.05% Proclin-300, 50% glycerol.

### **[ STORAGE AND STABILITY ]**

**Storage:** Avoid repeated freeze/thaw cycles.

Store at 4°C for frequent use.

Aliquot and store at -20°C for 12 months.

**Stability Test:** The thermal stability is described by the loss rate. The loss rate was determined by accelerated thermal degradation test, that is, incubate the protein at 37°C for 48h, and no obvious degradation and precipitation were observed. The loss rate is less than 5% within the expiration date under appropriate storage condition.

### [ IDENTIFICATION ]

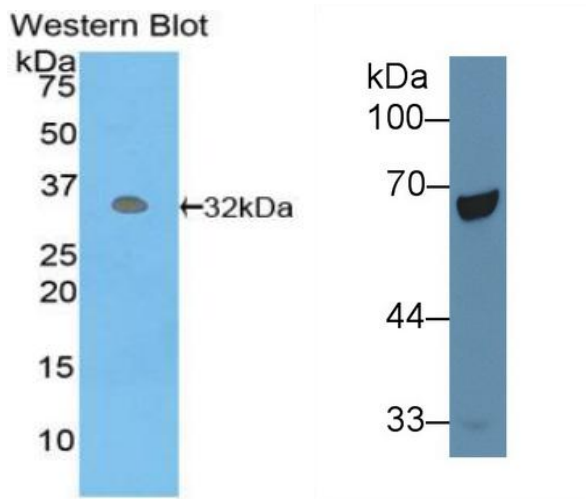


Figure. Western Blot; Sample:  
Recombinant PCK1, Human.

Western Blot; Sample: Human Liver  
Lysate  
Primary Ab: 2µg/mL Rabbit Anti-Human  
PCK1 Antibody  
Second Ab: 0.2µg/mL HRP-Linked  
Caprine Anti-Rabbit IgG Polyclonal  
Antibody

### [ IMPORTANT NOTE ]

The kit is designed for research use only, we will not be responsible for any issue if the kit was used in clinical diagnostic or any other procedures.

