



## Polyclonal Antibody to Actin Alpha 2, Smooth Muscle (ACTa2)

PA13055      100ul

### [ PROPERTIES ]

**Source:** Polyclonal antibody preparation

**Host:** Rabbit

**Purification:** Antigen-specific affinity chromatography followed by Protein A affinity chromatography.

**Traits:** Liquid

Concentration: 1mg/ml

Ig Isotype:IgG

**UOM:** 100μl

**Cross Reactivity:** Human, Mouse,Rat

**Applications:** WB,IHC,ICC/IF,FC,IP.

### [ IMMUNOGEN ]

Immunogen: Recombinant protein of human ACTa2 (Ile167~Phe377).

### [ APPLICATIONS ]

**Western blotting:** 0.5-2μg/mL;;

**Immunohistochemistry:** 5-20μg/mL;

**Immunocytochemistry:** 5-20μg/mL;

**Flow Cytometry:**5-20μg/mL;

**Immunoprecipitation:**5-20μg/mL;

Optimal working dilutions must be determined by end user.

### [ FORMULATION ]

**Form & Buffer:** Supplied as solution form in 0.01M PBS, pH7.4, containing 0.05% Proclin-300, 50% glycerol.



## **[ STORAGE AND STABILITY ]**

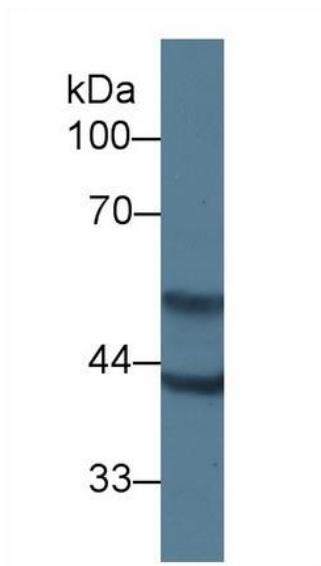
**Storage:** Avoid repeated freeze/thaw cycles.

Store at 4°C for frequent use.

Aliquot and store at -20°C for 12 months.

**Stability Test:** The thermal stability is described by the loss rate. The loss rate was determined by accelerated thermal degradation test, that is, incubate the protein at 37°C for 48h, and no obvious degradation and precipitation were observed. The loss rate is less than 5% within the expiration date under appropriate storage condition.

## **[ IDENTIFICATION ]**



Western Blot; Sample: Rat Skeletal muscle lysate; Primary Ab: 5µg/ml Rabbit Anti-Human ACTa2 Antibody

## **[ IMPORTANT NOTE ]**

The kit is designed for research use only, we will not be responsible for any issue if the kit was used in clinical diagnostic or any other procedures.

---

