



## Recombinant Creatine Kinase M+B (CKMB)

Catalog No.: TP09154

100µg

### Sequence Information

**Species:** Human

**Gene ID:**1158/1152

**Swiss Prot:**P06732/P12277

**Synonyms:**CKB/CKM

**Residues:**Lys11~Leu367 and Lys11~Leu367

KLNYKPEEEYPDL SKHNNHMAKVL TLELYKKLRDKETPSGFTVDDVIQTGVDNP  
GHPFIMTVGCVAGDEESYEVEFKELFDPIISDRHGGYKPTDKHKTDLNHENLKGG  
DDLDPNYVLSSRVRTGRSIRGYTLPPHCSRGERRAVEKLSVEALNSLTGEFKGK  
YYPLKSMTEKEQQQLIDHFLFDKPVSPLLLASGMARDWPDARGIWHNDNKSFL  
VWVNEEDHLRVISMEKGGNMKEVFRRFCVGLQKIEEIFKKAGHPFMWNQHLGYV  
LTCPSNLGTGLRGGVHVHKLALHLSKHPKFEEILTRLRLQKRGTGGVDTAAVGSVF  
DVSNADRLGSSEVEQVQLVVDGVKLMVEMEKKL  
KLRFAEDEFDPDL SAHNNHMAKVL TPELYAELRAKSTPSGFTLDDVIQTGVDNP  
GHPYIMTVGCVAGDEESYEVEFKDLFDPIIEDRHGGYKPSDEHKTDLNPDNLQGG  
DDLDPNYVLSSRVRTGRSIRGFCLPPHCSRGERRAIEKLAVEALSSLDGDLAGR  
YYALKSMTEAEQQQLIDHFLFDKPVSPLLLASGMARDWPDARGIWHNDNKTF  
VWVNEEDHLRVISMQKGGNMKEVFTRFCTGLTQIETLFKSKDYEFMWNPHLGYI  
LTCPSNLGTGLRAGVHIKLPNLGKHEKFSEVLKRLRLQKRGTGGVDTAAVGGVF  
DVSNADRLGFSEVELVQMVDGVKLLIEMEQR

### Product Information

**Source:** Prokaryotic expression.

**Host:** *E. coli*

**Tags:** N-terminal His Tag

**Subcellular Location:** Secreted.

**Purity:** >90%

**Traits:** Freeze-dried powder

**Buffer formulation:** PBS, pH7.4, 5% Trehalose.

**Original Concentration:** 200µg/mL

**Applications:** Positive Control; Immunogen; SDS-PAGE; WB.

(May be suitable for use in other assays to be determined by the end user.)

**Predicted isoelectric point:** 5.7

**Predicted Molecular Mass:** 41.5kDa



**Accurate Molecular Mass:** 41kDa as determined by SDS-PAGE reducing conditions.

## **[ USAGE ]**

Reconstitute in ddH<sub>2</sub>O to a concentration of 0.1-0.5 mg/mL. Do not vortex.

## **[ STORAGE AND STABILITY ]**

**Storage:** Avoid repeated freeze/thaw cycles.

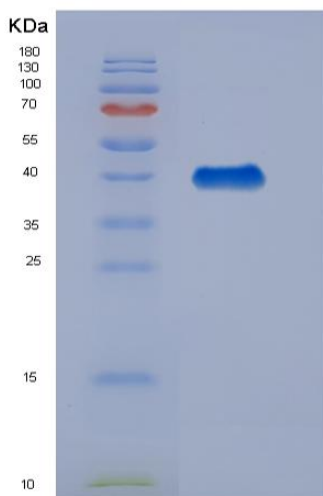
Store at 2-8°C for one month.

Aliquot and store at -80°C for 12 months.

**Stability Test:** The thermal stability is described by the loss rate. The loss rate was determined by accelerated thermal degradation test, that is, incubate the protein at 37°C for 48h, and no obvious degradation and precipitation were observed. The loss rate is

less than 5% within the expiration date under appropriate storage condition.

## **[ IDENTIFICATION ]**



**Figure 1. SDS-PAGE**

## **[ IMPORTANT NOTE ]**

The kit is designed for in vitro and research use only, we will not be responsible for any issue if the kit was used in clinical diagnostic or any other procedures.