



Polyclonal Antibody to Pepsin (PP)

PA13082

50ul

[PROPERTIES]

Source: Polyclonal antibody preparation

Host: Rabbit

Purification: Antigen-specific affinity chromatography followed by Protein A affinity chromatography.

Traits: Liquid

Concentration: 0.5mg/ml

Ig Isotype:IgG

UOM: 100µl

Cross Reactivity: Human

Applications:WB; IHC

[IMMUNOGEN]

Immunogen: Native Pepsin.

[APPLICATIONS]

Western blotting: 0.01-2µg/mL;

Immunohistochemistry: 5-20µg/mL;

Immunocytochemistry: 5-20µg/mL;

Optimal working dilutions must be determined by end user.

[FORMULATION]

Form & Buffer: Supplied as solution form in 0.01M PBS, pH7.4, containing 0.05% Proclin-300, 50% glycerol.

[STORAGE AND STABILITY]

Storage: Avoid repeated freeze/thaw cycles.

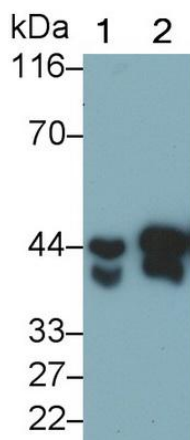


Store at 4°C for frequent use.

Aliquot and store at -20°C for 12 months.

Stability Test: The thermal stability is described by the loss rate. The loss rate was determined by accelerated thermal degradation test, that is, incubate the protein at 37°C for 48h, and no obvious degradation and precipitation were observed. The loss rate is less than 5% within the expiration date under appropriate storage condition.

[IDENTIFICATION]



Western Blot; Sample:

Lane1: HumanUrine;

Lane2: Porcine Stomach lysate

Primary Ab: 0.05µg/ml Rabbit AntiHuman PP Antibody

Second Ab:0.2µg/mL HRP-Linked Caprine

AntiRabbit IgG Polyclonal Antibody

[IMPORTANT NOTE]

The kit is designed for research use only, we will not be responsible for any issue if the kit was used in clinical diagnostic or any other procedures.
