



## Recombinant Human Stathmin 1 (STMN1)

Catalog No.: TP04054

100µg

### Sequence Information

**Species:** Human

**Gene ID:**3925

**Swiss Prot:**P16949

**Synonyms:**STMN1, Phosphoprotein p19 (pp19),  
Oncoprotein 18(Op18), pp17, Prosolin,  
Metablastin, LAP18 , Lag, LAP 18,  
Leukemia associated phosphoprotein p18,  
Metablastin, Oncoprotein 18, OP 18,  
OP18, p18, p19

**Residues:**Ala2~Asp149

ASSDIQVKELEKRASGQAFELILSPRSKESVPEFPLSPPKKKDLSLEETQKKLE

AAEERRKSHEAEVLKQLAEKREHEKEVLQKAIEENNNFSKMAEEKLTHKMEANK

ENREAQMAAKLERLRREKDKHIEEVKRNKESKDPADETED

### Product Information

**Source:** Recombinant expression.

**Host:** *E.coli*

**Tags:** N-terminal His Tag

**Subcellular Location:** Cytoplasm, Chromosome

**Purity:** >90%

**Traits:** Freeze-dried powder

**Buffer formulation:** PBS, pH7.4, containing 0.01% SKL, 1mM DTT, 5% Trehalose and Proclin300.

**Original Concentration:** 200µg/mL

**Applications:** Positive Control; Immunogen; SDS-PAGE; WB.

(May be suitable for use in other assays to be determined by the end user.)

**Predicted isoelectric point:** 6.6

**Predicted Molecular Mass:** 20.9kDa

**Accurate Molecular Mass:** 21kDa as determined by SDS-PAGE reducing conditions.

### [ USAGE ]

Reconstitute in ddH<sub>2</sub>O to a concentration of 0.1-0.5 mg/mL. Do not vortex.

### [ STORAGE AND STABILITY ]

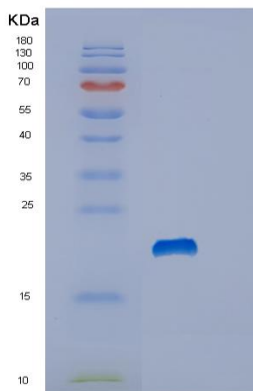
**Storage:** Avoid repeated freeze/thaw cycles.

Store at 2-8°C for one month.

Aliquot and store at -80°C for 12 months.

**Stability Test:** The thermal stability is described by the loss rate. The loss rate was determined by accelerated thermal degradation test, that is, incubate the protein at 37°C for 48h, and no obvious degradation and precipitation were observed. The loss rate is less than 5% within the expiration date under appropriate storage condition.

## [ IDENTIFICATION ]



**Figure 1. SDS-PAGE**

## [ IMPORTANT NOTE ]

The kit is designed for in vitro and research use only, we will not be responsible for any issue if the kit was used in clinical diagnostic or any other procedures.