

Recombinant Stem Cell Factor (SCF)

Catalog No.: TP04950

100µg

Sequence Information

Species: Rat

Gene ID:60427

Swiss Prot:P21581

Synonyms:Kit ligand;Hematopoietic growth factor KL;Mast cell growth factor;MGF;Steel factor;Stem cell factor;SCF

Residues:Glu27~Glu259

EICRNPVTDNVKDITKLVANLPNDYMITLNYVAGMDVLP SHCWL RDMVTHLSVS
LTTLLDKFSNISEGLSNYSIIDKLGKIVDDL VACMEENAPKNVKESLKKPETRN
FTPEEFFSIFNRSIDAFKDFMVASDTSDCVLSSTLGPEKDSRVSVTKPFMLPPV
AASSLRNDSSSSNRKAAKSPEDPGLQWTAMALPALISLVIGFAFGALYWKKKQS
SLTRAVENIQINEEDNE

Product Information

Source: Recombinant expression.

Host: *E.coli*

Tags: N-terminal His-Tag

Subcellular Location: Membrane.

Purity: >90%

Traits: Freeze-dried powder

Buffer formulation: PBS, pH7.4, containing 0.01% SKL, 1mM DTT, 5% Trehalose and Proclin300.

Original Concentration: 200µg/mL

Applications: Positive Control; Immunogen; SDS-PAGE; WB.

(May be suitable for use in other assays to be determined by the end user.)

Predicted isoelectric point: 5.8

Predicted Molecular Mass: 27.1kDa

Accurate Molecular Mass: 26kDa as determined by SDS-PAGE reducing conditions.

[USAGE]

Reconstitute in ddH₂O to a concentration of 0.1-0.5 mg/mL. Do not vortex.

[STORAGE AND STABILITY]

Storage: Avoid repeated freeze/thaw cycles.

Store at 2-8°C for one month.

Aliquot and store at -80°C for 12 months.

Stability Test: The thermal stability is described by the loss rate. The loss rate was determined by accelerated thermal degradation test, that is, incubate the protein at 37°C for 48h, and no obvious degradation and precipitation were observed. The loss rate is less than 5% within the expiration date under appropriate storage condition.

[IDENTIFICATION]

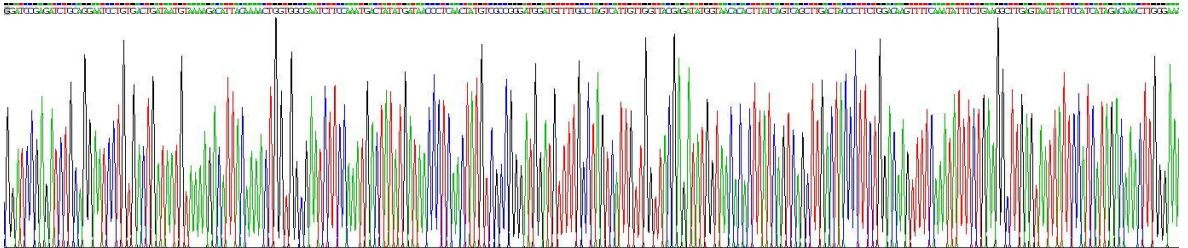


Figure 1. Gene Sequencing (Extract)

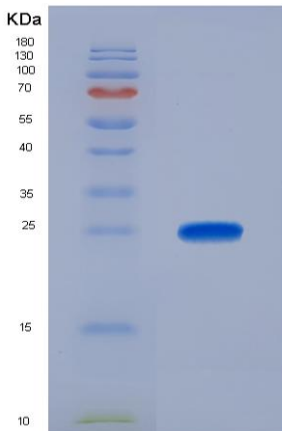


Figure 2. SDS-PAGE

[IMPORTANT NOTE]

The kit is designed for in vitro and research use only, we will not be responsible for any issue if the kit was used in clinical diagnostic or any other procedures.