



Recombinant Mouse G Protein Coupled Estrogen

Receptor 1 (GPER)

Catalog No.: TP09333 100µg

Sequence Information

Species: Mouse

Gene ID:76854

Swiss Prot:Q8BMP4

Synonyms:GPR30; CMKRL2; DRY12;
FEG-1; GPCR-Br; LERGU; LyGPR;
Membrane estrogen receptor;
Chemoattractant receptor-like 2;
Flow-induced endothelial G-protein
coupled receptor 1

Residues:Val10~Leu96

VGVEIYLGPVWPAPSNSTPLALNLSLALREDAPGNLTGDLSEHQYVIALFLSCLYTIFLFPIGFVGNILILVWNISFR
EKMTIPDL

Product Information

Source: Prokaryotic expression.

Host: *E. coli*

Tags: N-terminal His and GST Tag

Subcellular Location: Secreted.

Purity: >90%

Traits: Freeze-dried powder

Buffer formulation: PBS (PH7.4) , containing 5% Trehalose.

Original Concentration: 300µg/mL

Applications: Positive Control; Immunogen; SDS-PAGE; WB.

(May be suitable for use in other assays to be determined by the end user.)

Predicted isoelectric point: 4.2

Predicted Molecular Mass: 39.5kDa

Accurate Molecular Mass: 44kDa as determined by SDS-PAGE reducing conditions.

[USAGE]

Reconstitute in PBS (pH7.4) to a concentration of 0.1-0.5 mg/mL. Do not vortex.

[STORAGE AND STABILITY]

Storage: Avoid repeated freeze/thaw cycles.

Store at 2-8°C for one month.

Aliquot and store at -80°C for 12 months.

Stability Test: The thermal stability is described by the loss rate. The loss rate was determined by accelerated thermal degradation test, that is, incubate the protein at 37°C for 48h, and no obvious degradation and precipitation were observed. The



loss rate is less than 5% within the expiration date under appropriate storage condition.

[IDENTIFICATION]

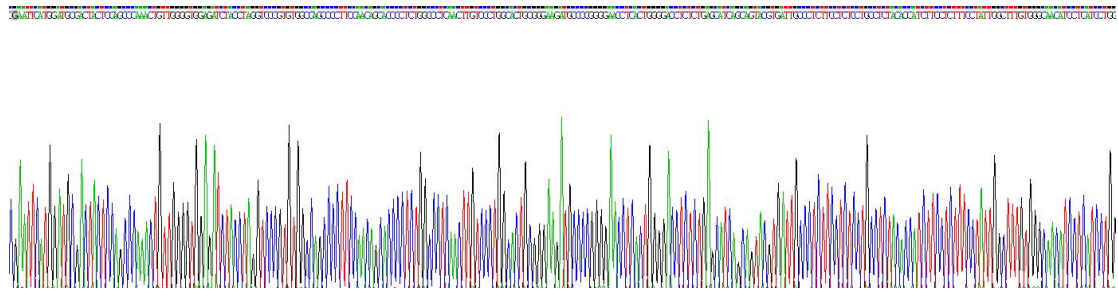


Figure 1. Gene Sequencing (Extract)

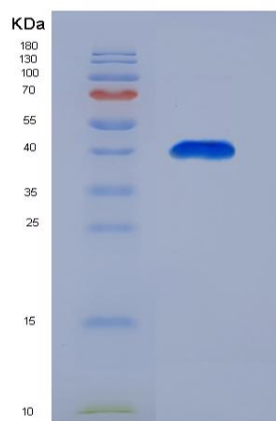


Figure 2. SDS-PAGE

[IMPORTANT NOTE]

The kit is designed for in vitro and research use only, we will not be responsible for any issue if the kit was used in clinical diagnostic or any other procedures.