



Recombinant Interleukin 1 Beta (IL1b)

Catalog No.: TP02595

100µg

Sequence Information

Species: Human

Gene ID:3553

Swiss Prot:P01584

Synonyms:Catabolin

Residues:Ala117-Ser269

APVR SLNCTLRDSQ QKSLVMSGPY ELKALHLQGQ
DMEQQVVFSM SFVQGEESND KIPVALGLKE KNLYLSCVLK DDKPTLQLES
VDPKNYPKKK MEKRFVFNKI EINNKLFEFES AQFPNWIYST SQAENMPVFL
GGTKGGQDIT DFTMQFVSS

PROPERTIES

Source: Eukaryotic expression.

Host: 293F cell

Tags: N-terminal His-tag

Purity: >95%

Endotoxin Level: <1.0EU per 1µg (determined by the LAL method).

Buffer Formulation: 10mM PBS, pH7.6, containing 5% trehalose.

Applications: Cell culture; Activity Assays; In vivo assays.

(May be suitable for use in other assays to be determined by the end user.)

Predicted isoelectric point: 5.9

Predicted Molecular Mass: 19.0kDa

Accurate Molecular Mass: 22kDa as determined by SDS-PAGE reducing conditions.

[USAGE]

Reconstitute in 10mM PBS (pH7.4) to a concentration of 0.1-0.5 mg/mL. Do not vortex.

[STORAGE AND STABILITY]

Storage: Avoid repeated freeze/thaw cycles.

Store at 2-8°C for one month.

Aliquot and store at -80°C for 12 months.

Stability Test: The thermal stability is described by the loss rate. The loss rate was determined by accelerated thermal degradation test, that is, incubate the protein at 37°C for 48h, and no obvious degradation and precipitation were observed. The loss rate is less than 5% within the expiration date under appropriate storage condition.

[IDENTIFICATION]

TGGCTG TGGATCTG ACTGGCCCTGGGG ACTGCGGAAAGCTGGTGAATCTGGTCAATGACCTGCTGGCTTGGGGTGGATATGGAGCAAGTGGTCTTCAATGCTTCTGCAAGGAGGAGGAGTATGCAAAATAGCTGAGGCTTGGGCTCAAGGAAAGAT
 A P V R S L N C T L R D S Q Q K S L V R S G P V E L K A L H L Q Q D R E Q Q V V F S M S F V Q G E S N D K I P V A L G L K E K N

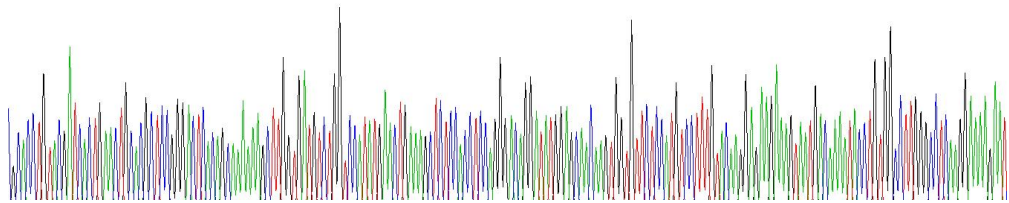


Figure 1. Gene Sequencing (extract)

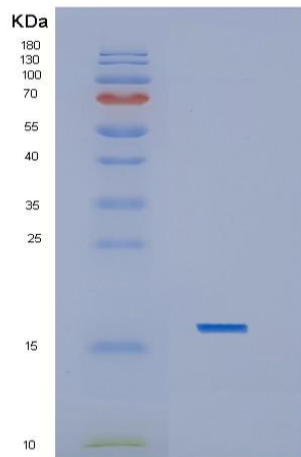


Figure 2. SDS-PAGE

Sample: Active recombinant IL1b, Human

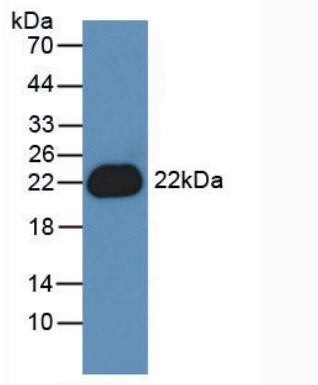


Figure 3. Western Blot

[IMPORTANT NOTE]

The kit is designed for in vitro and research use only, we will not be responsible for any issue if the kit was used in clinical diagnostic or any other procedures.