



Polyclonal Antibody to Pannexin 1 (PANX1)

PA14006 100ul

[PROPERTIES]

Source: Polyclonal antibody preparation

Host: Rabbit

Purification: Antigen-specific affinity chromatography followed by Protein A affinity chromatography.

Traits: Liquid

Concentration: 0.5mg/ml

Ig Isotype:IgG

UOM: 100µl

Cross Reactivity: Human

Applications: WB; IHC; ICC; IP.

[IMMUNOGEN]

Immunogen:Recombinant Protein of human PANX1.

[APPLICATIONS]

WB: 1:1000

IHC: 1:200

ICC/IF: 1:20

Optimal working dilutions must be determined by end user.

[FORMULATION]

Form & Buffer: Supplied as solution form in 0.01M PBS, pH7.4, containing 0.05% Proclin-300, 50% glycerol.

[STORAGE AND STABILITY]

Storage: Avoid repeated freeze/thaw cycles.



Store at 4°C for frequent use.

Aliquot and store at -20°C for 12 months.

Stability Test: The thermal stability is described by the loss rate. The loss rate was determined by accelerated thermal degradation test, that is, incubate the protein at 37°C for 48h, and no obvious degradation and precipitation were observed. The loss rate is less than 5% within the expiration date under appropriate storage condition.

[IDENTIFICATION]

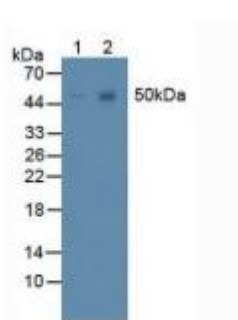
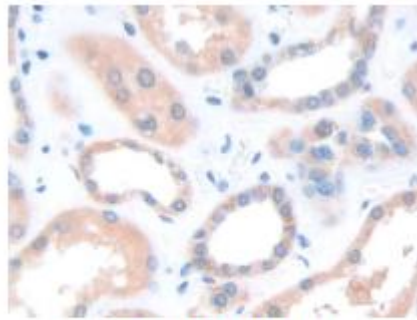


Figure. Western Blot; Lane1: Human SK-N-SH Cells; Lane2: Human U-87MG Cells.



DAB staining on IHC-P;
Samples: Human Kidney Tissue;

[IMPORTANT NOTE]

The kit is designed for research use only, we will not be responsible for any issue if the kit was used in clinical diagnostic or any other procedures.