

## Recombinant Calmodulin Like Protein 5 (CALML5)

Catalog No.: TP06448

100µg

### Sequence Information

**Species:** Human

**Gene ID:**51806

**Swiss Prot:**Q9NZT1

**Synonyms:**CLSP

**Residues:**Met1~Glu146

MAGELTPEEEAQYKKAFFSAVDTDGNGTINAQELGAALKATGKNLSEAQLRKLIS

EVDSDGDGEISFQEFLTAAKKARAGLEDLQVAFRAFDQDGDGHITVDELRRAMA

GLGQPLPQEELDAMIREADVDQDGRVNYEEFARMLAQE

### Product Information

**Source:** Recombinant expression.

**Host:** *E.coli*

**Tags:** N-terminal His-Tag

**Subcellular Location:** Extracellular vesicular exosome.

**Purity:** >90%

**Traits:** Freeze-dried powder

**Buffer formulation:** PBS, pH7.4, containing 0.01% SKL, 1mM DTT, 5% Trehalose and Proclin300.

**Original Concentration:** 200µg/mL

**Applications:** Positive Control; Immunogen; SDS-PAGE; WB.

(May be suitable for use in other assays to be determined by the end user.)

**Predicted isoelectric point:** 4.3

**Predicted Molecular Mass:** 19.6kDa

**Accurate Molecular Mass:** 20kDa as determined by SDS-PAGE reducing conditions.

### [ USAGE ]

Reconstitute in ddH<sub>2</sub>O to a concentration of 0.1-0.5 mg/mL. Do not vortex.

### [ STORAGE AND STABILITY ]

**Storage:** Avoid repeated freeze/thaw cycles.

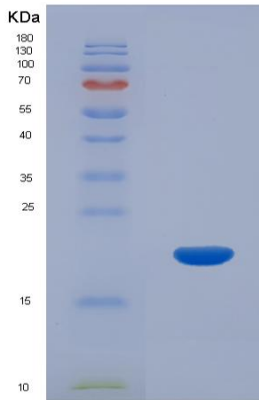
Store at 2-8°C for one month.

Aliquot and store at -80°C for 12 months.

**Stability Test:** The thermal stability is described by the loss rate. The loss rate was determined by accelerated thermal degradation test, that is, incubate the protein at 37°C for 48h, and no obvious degradation and precipitation were observed. The loss rate is

less than 5% within the expiration date under appropriate storage condition.

## [ IDENTIFICATION ]



**Figure 1. SDS-PAGE**

## [ IMPORTANT NOTE ]

The kit is designed for in vitro and research use only, we will not be responsible for any issue if the kit was used in clinical diagnostic or any other procedures.