

Recombinant Growth Arrest Specific Protein 6 (GAS6)

Catalog No.: TP09731

50µg

Sequence Information

Species: Mouse

Gene ID:14456

Swiss Prot:Q61592

Synonyms:AXLLG; AXSF; AXL Stimulatory
Factor; AXL receptor tyrosine kinase
ligand

Residues:Thr27-Pro674

TVLLRAREAAQFLRPQRRAAYQVFEEAKQGHLERECVEEVCSKEEAREVFENDP
ETEYFYPYQECMRKYGRPEEKNPDFAKCVQNLPDQCTPNPCDKKGTHICQDLM
GNFFCVCTDGWGGRLCDKDVNECVQKNGGCSQVCHNKPFSQCACHSGFSLASD
GQTCQDIDECTDSDTCGDARCKNLPGSYSCLDEGYTYSSKEKTCQDVDECQQD
RCEQTCVNSPGSYTCHCDGRGGLKLSPDMDTCEDILPCVPFSMAKSVKSLYLGR
MFGSTPVIRLRFKRLQPTRLLAEFDFRTFDPEGVLFFAGGRSDSTWIVLGLRAG
RLELQLRYNGVGRITSSGPTINHGMWQTISVEELERNLVIKVNKDAVMKIAVAG
ELFQLERGLYHLNLTVGGIPFKESELVQPINPRLDGCMRSWNWLNGEDSAIQET
VKANTKMQCFSVTERGSFFPGNGFATYRLNYTRTSLDVGTETTWEVKVVARIRP
ATDTGVLLALVGDDVVPISVALVDYHSTKKLKKQLVVLAVEDVALALMEIKVC
DSQEHTVTVSLREGEATLEVDGKGQSEVSTAQLQERLDTLKTHLQGSVHTYVG
GLPEVSVISAPVTAFYRGCMTELVNGKILDLDTASYKHSDITSHSCPPVEHATP

Product Information

Source: Eukaryotic expression.

Host: 293F cell

Tags: C-terminal His Tag

Subcellular Location: Secreted.

Purity: >95%

Traits: Freeze-dried powder

Buffer formulation: PBS, pH7.4, containing 0.01% SKL, 1mM DTT, 5% Trehalose and Proclin300.

Original Concentration: 1000µg/mL

Applications: Positive Control; Immunogen; SDS-PAGE; WB.

(May be suitable for use in other assays to be determined by the end user.)

Predicted isoelectric point: 5.2

Predicted Molecular Mass: 73kDa

Accurate Molecular Mass: 73kDa as determined by SDS-PAGE reducing conditions.

[USAGE]

Reconstitute in ddH₂O to a concentration of 0.1-0.5 mg/mL. Do not vortex.

[STORAGE AND STABILITY]

Storage: Avoid repeated freeze/thaw cycles.

Store at 2-8°C for one month.

Aliquot and store at -80°C for 12 months.

Stability Test: The thermal stability is described by the loss rate. The loss rate was determined by accelerated thermal degradation test, that is, incubate the protein at 37°C for 48h, and no obvious degradation and precipitation were observed. The loss rate is less than 5% within the expiration date under appropriate storage condition.

[IDENTIFICATION]

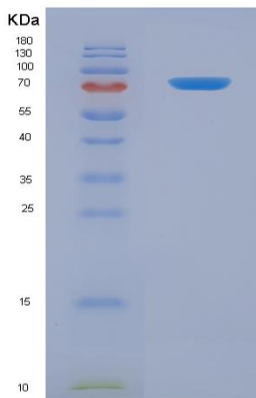


Figure 1. SDS-PAGE

[IMPORTANT NOTE]

The kit is designed for in vitro and research use only, we will not be responsible for any issue if the kit was used in clinical diagnostic or any other procedures.