



Recombinant Gingipain R1 (rgpA) protein

Catalog No.: TP09782 100µg

Sequence Information

Species: Bacteroides gingivalis

Gene ID:

Swiss Prot:P28784

Synonyms:Arg-gingipain Gingipain 1 RGP-1

Residues: Tyr228-Ser720

YTPVEEKQNGRMIVIVAKKYEKDFVDWKNQRGLRTEVKVAEDIASPVTANAIQQFVKQEYEKEGNDLTYVLLVGDH
KDIPAKITPGIKSDQVYGQIVGNDHYNEVFIGRFSCSKEDLKTQIDRTIHYERNITTEDKWLQALCIAAEGGPSAD
NGESDIQHENVIANLLTQYGYTKIIKCYDPGVTPKNIIDAFNGGISLVNYTGHGSETAWGTSHFGTTHVKQLTNSNQLP
FIFDVACVNGDFLFSMPCFEAELMRAQKDGKPTGTVAIIASTINQSWASPMRGQDEMNEILCEKHPNNIKRTFGGVTMN
GMFAMVEKYKKDGEKMLDTWTVFGDPSLLVRTLVPPTKMQVTAPAQINLTASVNVSCDYNGAIATISANGKMFSGSAVVE
NGTATINLTGLTNESTLTLTVVGYNKETVIKTINTNGEPNPYQPVSNLTATTQGQKVTLKWDAPSTKTNATTNTARSVD
GIRELVLLSVSDAPELLRS

Product Information

Source: Prokaryotic expression.

Host: Mammalian cells

Tags: N-terminal His-Tag.+GST

Subcellular Location: Secreted.

Purity: >90%

Traits: Freeze-dried powder

Buffer formulation: 20mM Tris, 150mM NaCl, pH8.0, 5% Trehalose.

Original Concentration: 200µg/mL

Applications: Positive Control; Immunogen; SDS-PAGE; WB.

(May be suitable for use in other assays to be determined by the end user.)

Predicted isoelectric point: 5.3

Predicted Molecular Mass: 79kDa

Accurate Molecular Mass: 79kDa as determined by SDS-PAGE reducing conditions.

[USAGE]

Reconstitute in ddH₂O to a concentration of 0.1-0.5 mg/mL. Do not vortex.

[STORAGE AND STABILITY]

Storage: Avoid repeated freeze/thaw cycles.

Store at 2-8°C for one month.

Aliquot and store at -80°C for 12 months.

Stability Test: The thermal stability is described by the loss rate. The loss rate was determined by accelerated thermal degradation test, that is, incubate the protein at 37°C for 48h, and no obvious degradation and precipitation were observed. The loss rate is less than 5% within the expiration date under appropriate storage condition.

[IDENTIFICATION]

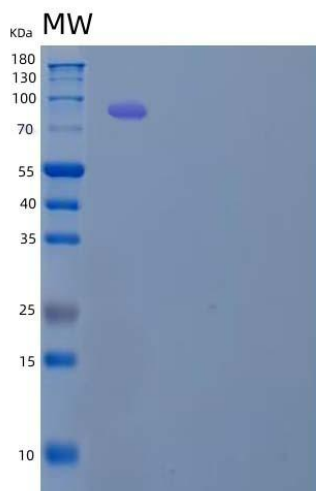


Figure 1. SDS-PAGE

[IMPORTANT NOTE]

The kit is designed for in vitro and research use only, we will not be responsible for any issue if the kit was used in clinical diagnostic or any other procedures.