



# Recombinant Low Density Lipoprotein Receptor Related Protein 1 (LRP1)

Catalog No.: TP09787

100µg

## Sequence Information

**Species:** Human

**Gene ID:**4035

**Swiss Prot:**Q07954

**Synonyms:**CD91; LRP; A2MR; APOER; APR;

TGFBR5; Alpha-2-Macroglobulin

Receptor; Prolow-density lipoprotein

receptor-related protein 1;

Apolipoprotein E receptor

**Residues:**Ala20~Asp429

AIDAPKTCSPKQFACRDQITCISKGWRCDCPDGSDEAPEICPQSKAQRCQ  
PNEHNCLGTELCVPM SRLCNGVQDCMDGSDEGPHCRELQGNC SRLGCGHHCVPT  
LDGPTCYCNSSFQLQADGKTCKDFDECSVYGTC SQLCTNTDGSFICGVEGYLL  
QPDNRSCAKNEPVDRPPVLLIANSQNILATYLSGAQVSTITPTSTRQTTAMDF  
SYANETVCWVHVGD SAAQTQLKCARMPGLKGFVDEHTINISLSLHHVEQMAIDW  
LTGNFYFVDDIDDRIFVCNRNGDTCVTLLDLELYNPKGIALDPAMGKVFFTDYG  
QIPKVERCDMDGQNR TKLVDSKIVFPHGITLDLVSRLVYWADAYLDYIEVVDYE  
GKGRQTIIQGILIEHLYGLTVFENYLYATNSD

## Product Information

**Source:** Recombinant expression.

**Host:** *E.coli*

**Tags:** N-terminal His-Tag

**Subcellular Location:** Membrane, Nucleus, Golgi apparatus.

**Purity:** >90%

**Traits:** Freeze-dried powder

**Buffer formulation:** PBS, pH7.4, containing 0.01% SKL, 1mM DTT, 5% Trehalose and Proclin300.

**Original Concentration:** 200µg/mL

**Applications:** Positive Control; Immunogen; SDS-PAGE; WB.

(May be suitable for use in other assays to be determined by the end user.)

**Predicted isoelectric point:** 4.7

**Predicted Molecular Mass:** 49.2kDa

**Accurate Molecular Mass:** 49kDa as determined by SDS-PAGE reducing conditions.

## **[ USAGE ]**

Reconstitute in ddH<sub>2</sub>O to a concentration of 0.1-0.5 mg/mL. Do not vortex.

## **[ STORAGE AND STABILITY ]**

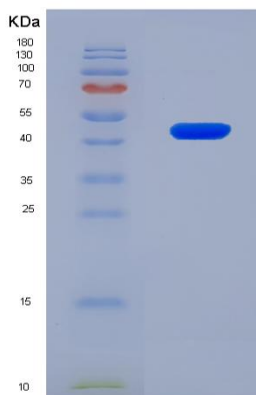
**Storage:** Avoid repeated freeze/thaw cycles.

Store at 2-8°C for one month.

Aliquot and store at -80°C for 12 months.

**Stability Test:** The thermal stability is described by the loss rate. The loss rate was determined by accelerated thermal degradation test, that is, incubate the protein at 37°C for 48h, and no obvious degradation and precipitation were observed. The loss rate is less than 5% within the expiration date under appropriate storage condition.

## **[ IDENTIFICATION ]**



**Figure 1. SDS-PAGE**

## **[ IMPORTANT NOTE ]**

The kit is designed for in vitro and research use only, we will not be responsible for any issue if the kit was used in clinical diagnostic or any other procedures.