

Recombinant Aldehyde Dehydrogenase 9 Family, Member A1 (ALDH9A1)

Catalog No.: TP09846

100µg

Sequence Information

Species: Human

Gene ID:223

Swiss Prot:P49189

Synonyms:ALDH4; ALDH7; ALDH9; E3;

TMABADH;

4-Trimethylaminobutyraldehyde

Dehydrogenase; Aldehyde

dehydrogenase E3 isozyme;

Gamma-aminobutyraldehyde

dehydrogenase

Residues:Met1-Phe494

MSTGTFVVSQPLNYRGGARVEPADASGTEKAFEPATGRVIATFTCSGEKEVNLA
VQNAKA AFKIWSQKSGMERCRI LLEAARIIREREDEIATMECINNGKSIFEARL
DIDISWQC LEYYAGLAASMA GEHIQLPGGSFGYTRREPLGVCVGIGAWNYPFQI
ASWKSAPALACGNAMVFKPSPTPV SALL LAEIYSEAGVPPGLFNVVQGAATG
QFLCQH PDVAKVSFTG SVPTGMKIMEMSAKGIKPV TLELGGSPLIIFSDCDMN
NAVKGALMANFLTQGQVCCNGTRV FVQKEILDKFTEE VVKQTQRIKIGDPLLED
TRMGPLINRPHLERVLGFVKVAKEQGAKVLCGGDIYVPEDPKLKDGYMPCVL
TNCRDDMT CVKEEIFGPVMSILSFDTEAEVLERANDTTFLAAGVFTRDIQRAH
RVVAELQAGTCFINNYNVPVELPFGGYKKSGFGRENGRVTIEYYSQLKTVCVE
MGDVESAF

Product Information

Source: Recombinant expression.

Host: *E.coli*

Tags: N-terminal His-Tag and SUMO-tag

Subcellular Location: Secreted.

Purity: >90%

Traits: Freeze-dried powder

Buffer formulation: PBS, pH7.4, containing 0.01% SKL, 1mM DTT, 5% Trehalose and Proclin300.

Original Concentration: 200µg/mL

Applications: Positive Control; Immunogen; SDS-PAGE; WB.

(May be suitable for use in other assays to be determined by the end user.)

Predicted isoelectric point: 5.6

Predicted Molecular Mass: 67.5kDa

Accurate Molecular Mass: 70kDa as determined by SDS-PAGE reducing conditions.

[USAGE]

Reconstitute in ddH₂O to a concentration of 0.1-0.5 mg/mL. Do not vortex.

[STORAGE AND STABILITY]

Storage: Avoid repeated freeze/thaw cycles.

Store at 2-8°C for one month.

Aliquot and store at -80°C for 12 months.

Stability Test: The thermal stability is described by the loss rate. The loss rate was determined by accelerated thermal degradation test, that is, incubate the protein at 37°C for 48h, and no obvious degradation and precipitation were observed. The loss rate is less than 5% within the expiration date under appropriate storage condition.

[IDENTIFICATION]

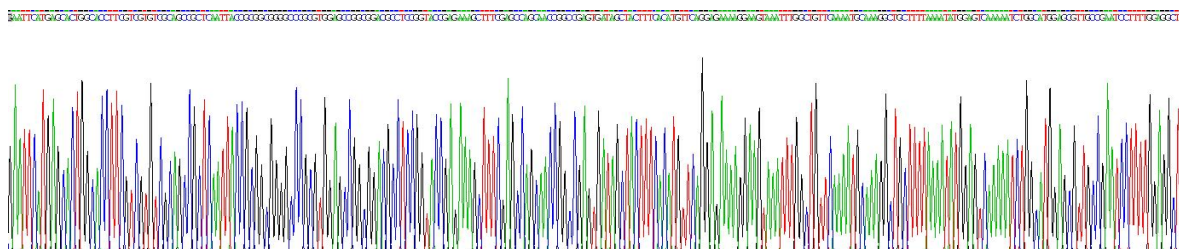


Figure 1. Gene Sequencing (Extract)

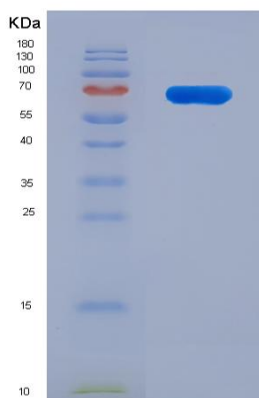


Figure 2. SDS-PAGE



[IMPORTANT NOTE]

The kit is designed for in vitro and research use only, we will not be responsible for any issue if the kit was used in clinical diagnostic or any other procedures.