



## Recombinant Human Estrogen Receptor Beta (ERb)

Catalog No.: TP09791

100µg

### Sequence Information

**Species:** Human

**Gene ID:**2100

**Swiss Prot:**Q92731

**Synonyms:** ESR2

**Residues:**Met1-Gln530

MDIKNSPSSLNSPSSYNCSQSILPLEHGSIYIPSSYVDSHHEYPAAMTFYSPAVMNYSIPSNVTNLEGGP  
GRQTTSPNVLWPTPGHLSPLVVHRQLSHLYAEPQKSPWCEARSLEHTLPVNRETLLKRVSGNRCASP  
VTGPGSKRDAHFCAVCSGYHYGVWSCEGCKAFFKRSIQGHNDYICPATNQCTIDKNRRKSCQA  
CRLRKCYEVGMVKCGSRRERCYRLVRRQRSADQLHCAGKAKRSGGHAPRVRELLLDALSPEQLV  
LTLLEAEPHVLISRPSAPFTEASMMMSLTKLADKELVHMISWAKKIPGFVELSLFDQVRLLDESCWMEV  
LMMGLMWRSIDHPGKLIFAPDLVDRDEGKCEGILEIFDMLLATTSRFRELKLQHKEYLCVKAMILLNS  
SMYPLVTATQDADSSRKLHLLNAVTDALVWVIAKSGISSQQQSMRLANLLMLLSHVRHASNKGMEHL  
LNMKCKNVVPVYDLLLEMLNAHVLRGCKSSITGSECSAEDSKSKEGSQNPQSQ

### Product Information

**Source:** Prokaryotic expression.

**Host:** *E. coli*

**Tags:** N-terminal His-Tag+sumo

**Subcellular Location:** Membrane.

**Purity:** >80%

**Traits:** Freeze-dried powder

**Buffer formulation:** 20mM Tris, 150mM NaCl, pH8.0, containing 1mM EDTA, 1mM DTT, 0.01% sarcosyl, 5%Trehalose .

**Original Concentration:** 200µg/mL

**Applications:** Positive Control; Immunogen; SDS-PAGE; WB.

(May be suitable for use in other assays to be determined by the end user.)

**Predicted isoelectric point:** 8.81

**Predicted Molecular Mass:** 74kDa

**Accurate Molecular Mass:** 75kDa as determined by SDS-PAGE reducing conditions.

### **[ USAGE ]**

Reconstitute in 20mM Tris, 150mM NaCl (pH8.0) to a concentration of 0.1-0.5 mg/mL. Do not vortex.

### **[ STORAGE AND STABILITY ]**

**Storage:** Avoid repeated freeze/thaw cycles.

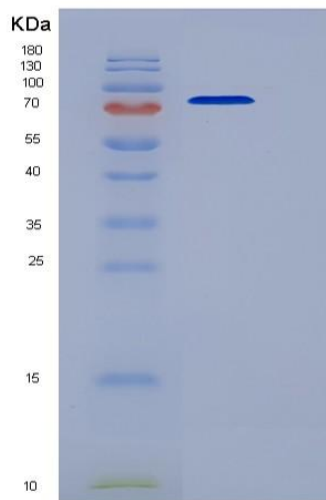
Store at 2-8°C for one month.

Aliquot and store at -80°C for 12 months.

**Stability Test:** The thermal stability is described by the loss rate. The loss rate was determined by accelerated thermal degradation test, that is, incubate the protein at 37°C for 48h, and no obvious degradation and precipitation were observed. The loss rate is less than 5% within the expiration date

under appropriate storage condition.

### **[ IDENTIFICATION ]**



**Figure 1. SDS-PAGE**

### **[ IMPORTANT NOTE ]**

The kit is designed for in vitro and research use only, we will not be responsible for any issue if the kit was used in clinical diagnostic or any other procedures.