



Recombinant Chymotrypsin C (CTRC)

Catalog No.: TP09796 50µg

Sequence Information

Species: Human

Gene ID: 11330

Swiss Prot: Q99895

Synonyms: ELA4; CTRC; Elastase 4 ; Caldecrin

Residues: Val30-Leu268

VVGGEDARPHSWPWQISLQYLKNDTWRHTCGGTLIASNFVLTAAHCI SNTRTYRVAVGKNNLEVEDEEGSLFVGVD
T I HVHKRWNALLLRNDIALIKLAHEVELSDTIQVACLPEKDSLLPKDYPCYVTGWGRLWTNGPIADKLQQGLQPVVDH
ATCSRIDWWGFRVKKTMVCAGGDGVISACNGDSGGPLNCQLENGSWEVFGIVSFGSRRGCNTRKKPVVYTRVSAYID
WINEKMQL

Product Information

Source: Prokaryotic expression.

Host: *E. coli*

Tags: N-terminal His-Tag+GST

Subcellular Location: Secreted.

Purity: >90%

Traits: Freeze-dried powder

Buffer formulation: PBS (PH7.4) , containing 5% Trehalose.

Original Concentration: 400µg/mL

Applications: Positive Control; Immunogen; SDS-PAGE; WB.

(May be suitable for use in other assays to be determined by the end user.)

Predicted isoelectric point: 6.6

Predicted Molecular Mass: 56kDa

Accurate Molecular Mass: 57kDa as determined by SDS-PAGE reducing conditions.

[USAGE]

Reconstitute in PBS (pH7.4) to a concentration of 0.1-0.5 mg/mL. Do not vortex.

[STORAGE AND STABILITY]

Storage: Avoid repeated freeze/thaw cycles.

Store at 2-8°C for one month.

Aliquot and store at -80°C for 12 months.

Stability Test: The thermal stability is described by the loss rate. The loss rate was determined by accelerated thermal degradation test, that is, incubate the protein at 37°C for 48h, and no obvious degradation and precipitation were observed. The loss rate is less than 5% within the expiration date under appropriate storage condition.

[IDENTIFICATION]

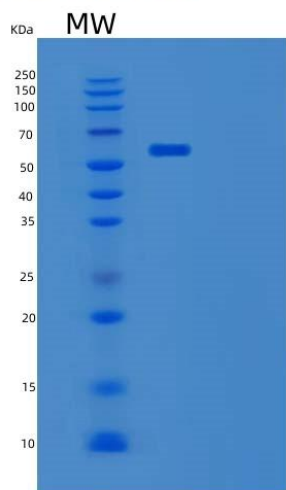


Figure . SDS-PAGE

[IMPORTANT NOTE]

The kit is designed for in vitro and research use only, we will not be responsible for any issue if the kit was used in clinical diagnostic or any other procedures.