



Recombinant Human SUMO-activating enzyme subunit 1 (SAE1)

Catalog No.: TP10005 100µg

Sequence Information

Species: Human

Gene ID:10055

Swiss Prot:Q9UBE0

Synonyms:AOS1, SUA1, UBLE1A

Residues:Met1-Lys346

MVEKEEAGGGISEEEAAQYDRQIRLWGLEAQKRLRASRVLLVGLKGLGAEIAKNLILAGVKGLTMLDHEQVTPEDPGAQ
FLIRTGSVGRNRAEASLERAQNLNPMVDVKVDTEDIEKKPESFFTQFDAVCLTCCSRDVIVKVDQICHKNSIKFFTGDV
FGYHGYTFANLGEHEFVEEKTAKVAKVSQGVEDGPDTKRAKLDSETTMVKKVVFPCPVKEALEVDWSSEKAKAALKRTT
SDYFLLQVLLKFRTDKGRDPSSDTYEEDSELLQIRNDVLDLSLGISPDLLPEDFVRYCFSEMAPVCAVVGILAQEIVK
ALSQRDPPHNNFFFFDGMKNGIVECLGPK

Product Information

Source: Prokaryotic expression.

Host: *E. coli*

Tags: N-terminal His-Tag +GST

Subcellular Location: Secreted.

Purity: >95%

Traits: Freeze-dried powder

Buffer formulation: PBS (PH7.4) , containing 5% Trehalose.

Original Concentration: 200µg/mL

Applications: Positive Control; Immunogen; SDS-PAGE; WB.

(May be suitable for use in other assays to be determined by the end user.)

Predicted isoelectric point: 5.17

Predicted Molecular Mass: 65.3kDa

Accurate Molecular Mass: 66kDa as determined by SDS-PAGE reducing conditions.

[USAGE]

Reconstitute in PBS (pH7.4) to a concentration of 0.1-0.5 mg/mL. Do not vortex.

[STORAGE AND STABILITY]

Storage: Avoid repeated freeze/thaw cycles.

Store at 2-8°C for one month.

Aliquot and store at -80°C for 12 months.

Stability Test: The thermal stability is described by the loss rate. The loss rate was determined by accelerated thermal degradation test, that is, incubate the protein at 37°C for 48h, and no obvious degradation and precipitation were observed. The loss rate is less than 5% within the expiration date under appropriate storage condition.



[IDENTIFICATION]

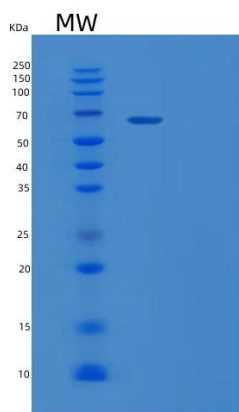


Figure 2. SDS-PAGE

[IMPORTANT NOTE]

The kit is designed for in vitro and research use only, we will not be responsible for any issue if the kit was used in clinical diagnostic or any other procedures.