

Recombinant Inhibin Beta E (INHbE)

Catalog No.: TP10118

50µg

Sequence Information

Species: Rat

Gene ID:83711

Swiss Prot:O88959

Synonyms:INH-bE; Activin beta-E chain

Residues:Thr237-Ser350

TPTCESETPLCCRRDHYVDFQELGWRDWILQPEGYQLNYCSGQCPPHLAGSPGIAASFHSAVFSLLKANNPWAGSSCCVPTARRPLSLLYLDHNGNV
VKTDVPDMVVEACGCS

Product Information

Source: Prokaryotic expression.

Host: *E. coli*

Tags: N-terminal His Tag

Subcellular Location: Secreted.

Purity: >90%

Traits: Freeze-dried powder

Buffer formulation: PBS, pH7.4, containing 0.01% skl,5%Trehalose.

Original Concentration: 100µg/mL

Applications: Positive Control; Immunogen; SDS-PAGE; WB.

(May be suitable for use in other assays to be determined by the end user.)

Predicted isoelectric point: 6.0

Predicted Molecular Mass: 14.0kDa

Accurate Molecular Mass: 17kDa as determined by SDS-PAGE reducing conditions.

[USAGE]

Reconstitute in ddH₂O to a concentration of 0.1-0.5 mg/mL. Do not vortex.

[STORAGE AND STABILITY]

Storage: Avoid repeated freeze/thaw cycles.

Store at 2-8°C for one month.

Aliquot and store at -80°C for 12 months.

Stability Test: The thermal stability is described by the loss rate. The loss rate was determined by accelerated thermal degradation test, that is, incubate the protein at 37°C for 48h, and no obvious degradation and precipitation were observed. The loss rate is less than 5% within the expiration date under appropriate storage condition.

[IDENTIFICATION]

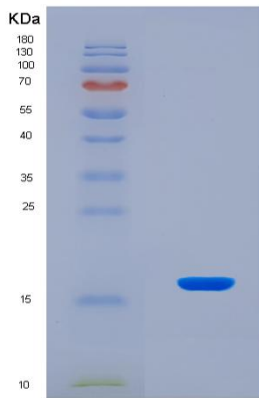


Figure 1. SDS-PAGE

[IMPORTANT NOTE]

The kit is designed for in vitro and research use only, we will not be responsible for any issue if the kit was used in clinical diagnostic or any other procedures.