

Recombinant Epidermal Growth Factor Receptor (EGFR)

Catalog No.: TP10211

50µg

Sequence Information

Species: Human

Gene ID:1956

Swiss Prot:P00533

Synonyms:ErbB-1; ErbB1; ER1; ERB-B1;

MENA; HER1; Erythroblastic Leukemia

Viral(v-Erb-B)oncogene Homolog,Avian;

Proto-oncogene c-ErbB-1; Receptor

tyrosine-protein kinase erbB-1

Residues:His888-Ala1210

HRIYTHQSDVWSYGVTVWELMTFGSKPYDGIPASEISSILEKGERLPQPPICTI
DVYMIMVKCWMIDADSRPKFRELIIEFSKMARDPQRYLVIQGDERMHLPSPDTS
NFYRALMDEEDMDDVDADEYLIPQQGFFSPSTSRTPLLSSLSATSNNSTVAC
IDRNLQSCPIKEDSFLQRYSSDPTGALTEDSIDDTFLPVPEYINQSVKRPAG
SVQNPVYHNQPLNPAPSRDPHYQDPHSTAVGNPEYLNTVQPTCVNSTFDSPAHW
AQKGSHQISLDNPDYQQDFFPKAKPNGIFKGSTAENAEYLRVAPQSSEFIGA

Product Information

Source: Prokaryotic expression.

Host: *E. coli*

Tags:N-terminal His Tag

Subcellular Location: Membrane.

Purity: >90%

Traits: Freeze-dried powder

Buffer formulation:PBS, pH7.4, containing 0.1% SKL, 5% Trehalose.

Original Concentration: 200µg/mL

Applications: Positive Control; Immunogen; SDS-PAGE; WB.

(May be suitable for use in other assays to be determined by the end user.)

Predicted isoelectric point: 5.2

Predicted Molecular Mass: 39.9kDa

Accurate Molecular Mass: 44kDa as determined by SDS-PAGE reducing conditions.

[USAGE]

Reconstitute in ddH₂O to a concentration of 0.1-0.5 mg/mL. Do not vortex.

[STORAGE AND STABILITY]

Storage: Avoid repeated freeze/thaw cycles.

Store at 2-8°C for one month.

Aliquot and store at -80°C for 12 months.

Stability Test: The thermal stability is described by the loss rate. The loss rate was determined by accelerated thermal degradation test, that is, incubate the protein at 37°C for 48h, and no obvious degradation and precipitation were observed. The loss rate is less than 5% within the expiration date under appropriate storage condition.

[IDENTIFICATION]

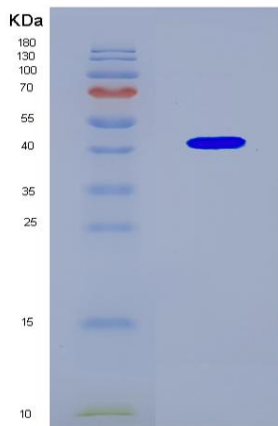


Figure 1. SDS-PAGE

[IMPORTANT NOTE]

The kit is designed for in vitro and research use only, we will not be responsible for any issue if the kit was used in clinical diagnostic or any other procedures.