



beta Actin Recombinant Rabbit mAb

RMA02930

30ul

[PROPERTIES]

Source: Polyclonal antibody preparation

Host: Rabbit

Purification: Antigen-specific affinity chromatography followed by Protein A affinity chromatography.

Traits: Liquid

Concentration: 1.0mg/ml

Ig Isotype:IgG

UOM:30μl

Cross Reactivity: Human, Mouse, Rat, Chicken, Pig, Zebrafish, Cow, Dog

Applications: WB,IHC,ICC/IF,FC.

[IMMUNOGEN]

Immunogen: A synthetic peptide of beta Actin.

[APPLICATIONS]

WB: 1:1000

IHC: 1:200

ICC/IF: 1:20

FC: 1:20

Optimal working dilutions must be determined by end user.

[FORMULATION]

Form & Buffer: Supplied as solution form in 0.01M PBS, pH7.4, containing 0.05% Proclin-300, 50% glycerol.

[STORAGE AND STABILITY]

Storage: Avoid repeated freeze/thaw cycles.

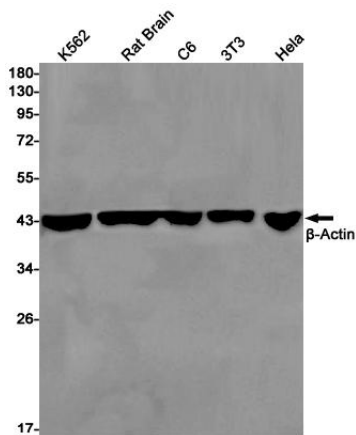


Store at 4°C for frequent use.

Aliquot and store at -20°C for 12 months.

Stability Test: The thermal stability is described by the loss rate. The loss rate was determined by accelerated thermal degradation test, that is, incubate the protein at 37°C for 48h, and no obvious degradation and precipitation were observed. The loss rate is less than 5% within the expiration date under appropriate storage condition.

[IDENTIFICATION]



Western blot analysis of Anti-beta Actin antibody(RMA02930)

Gel: 10% SDS-PAGE

Lysate: 20 μg

Primary antibody: RMA02930(beta Actin antibody)at dilution 1:1000

Secondary antibody: Goat anti rabbit IgG (SPA10002)at 1:1000 dilution

[IMPORTANT NOTE]

The kit is designed for research use only, we will not be responsible for any issue if the kit was used in clinical diagnostic or any other procedures.
