

Recombinant Human Interleukin-1 receptor-like 1(IL1RL1)

Catalog No.: TP02626

50µg

Sequence Information

Species: Human

Gene ID:9173

Swiss Prot:Q01638

Synonyms: Interleukin-1 receptor-like 1
isoform 1 , IL1RL1, DER4, FIT-1,
IL33R, ST2, ST2L, ST2V, T1, DER-4,
DER4, FIT 1, Growth stimulation
expressed homolog of mouse growth
stimulation-expressed Il1rl1.

Residues:Lys19-Ser328

KFSKQSWGLENEALIVRCPRQGKPSYTVDWYYSQTNKSIPTQERNRVFASGQLL
KFLPAAVADSGIYTCIVRSPTFNRTGYANVTIYKKQSDCNVPDYLMYSTVSGSE
KNSKIYCPIDLYNWTAPLEWFKNCQALQGSRYRAHKSFLVIDNVMTEADGDT
CKFIHNENGANYSVTATRSFTVKDEQGFSLFPVIGAPAQNEIKEVEIGKNANLT
CSACFGKGTQFLAAVLWQLNGTKITDFGEPRIQQEEGQNQSFSNGLACLDMLR
IADVKEEDLLLQYDCLALNLHGLRRHTVRLSRKNPIDHHS

Product Information

Source: Eukaryotic expression.

Host: *Baculovirus-Insect Cells*

Tags: N-terminal His-Tag

Subcellular Location: Membrane.

Purity: >95%

Traits: Freeze-dried powder

Buffer formulation: PBS, pH7.4, containing 0.01% SKL, 1mM DTT, 5% Trehalose and Proclin300.

Original Concentration: 1000µg/mL

Applications: Positive Control; Immunogen; SDS-PAGE; WB.

(May be suitable for use in other assays to be determined by the end user.)

Predicted isoelectric point: 8.1

Predicted Molecular Mass: 36kDa

Accurate Molecular Mass: 36kDa as determined by SDS-PAGE reducing conditions.

[USAGE]

Reconstitute in ddH₂O to a concentration of 0.1-0.5 mg/mL. Do not vortex.

[STORAGE AND STABILITY]

Storage: Avoid repeated freeze/thaw cycles.

Store at 2-8°C for one month.

Aliquot and store at -80°C for 12 months.

Stability Test: The thermal stability is described by the loss rate. The loss rate was determined by accelerated thermal degradation test, that is, incubate the protein at 37°C for 48h, and no obvious degradation and precipitation were observed. The loss rate is less than 5% within the expiration date under appropriate storage condition.

[IDENTIFICATION]

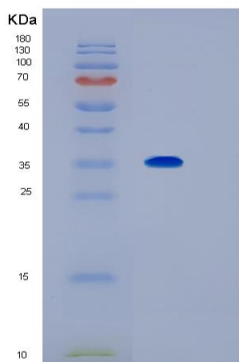


Figure 1. SDS-PAGE

[IMPORTANT NOTE]

The kit is designed for in vitro and research use only, we will not be responsible for any issue if the kit was used in clinical diagnostic or any other procedures.