

Recombinant Cytochrome P450 1B1 (CYP1B1)

Catalog No.: TP11397

100µg

Sequence Information

Species: Human

Gene ID:1545

Swiss Prot:Q16678

Synonyms:CP1B1

Residues:Pro51-Gln543

PPGPFAPWPLIGNAAAVGQAAHLSFARLARRYGDVFQIRLGGSCPIVVLNGERAIH
QALVQQGSADFADRPAPAFASFRVVSNGRSMAFGHYSEHWKQRRAAHSMMRNFSTR
QPRSRQVLEGHVLSSEARELVALLVRGSADGAFDPRPLTVVAVANVMSAVCFGC
RYSHDDPEFRELLSHNEEFGRVTGAGSLVDVMPWLQYFPNPVRTVFRFEQLNR
NFSNFIIDKFLRHCESLRPGAAPRDMMDAFILSAEKKAAGDSHGGGARLDLENV
PATITDIFGASQDTLSTALQWLLLLFTRYPDVQTRVQAELDQVVGRDRLPCMGD
QPNLPYVLAFLYEAMRFSSFPVTIPHATTANTSVLGYHIPKDTVVFVNQWSVN
HDPLKWPENFDPARFLDKDGLINKDLTSRVMIFSVGKRRICIGEELSKMQLFL
FISILAHQCDFRANPNEPAKMNFSYGLTIKPKSFKVNVTLRESMELLDQAVQNL
QAKETCQ

Product Information

Source: Recombinant expression.

Host: *E.coli*

Tags: N-terminal His and SUMO Tag

Subcellular Location: Endoplasmic reticulum membrane.

Purity: >90%

Traits: Freeze-dried powder

Buffer formulation: PBS, pH7.4, containing 0.01% SKL, 1mM DTT, 5% Trehalose and Proclin300.

Original Concentration: 200µg/mL

Applications: Positive Control; Immunogen; SDS-PAGE; WB.

(May be suitable for use in other assays to be determined by the end user.)

Predicted isoelectric point: 8.4

Predicted Molecular Mass: 71.2kDa

Accurate Molecular Mass: 71kDa as determined by SDS-PAGE reducing conditions.

[USAGE]

Reconstitute in ddH₂O to a concentration of 0.1-0.5 mg/mL. Do not vortex.

[STORAGE AND STABILITY]

Storage: Avoid repeated freeze/thaw cycles.

Store at 2-8°C for one month.

Aliquot and store at -80°C for 12 months.

Stability Test: The thermal stability is described by the loss rate. The loss rate was determined by accelerated thermal degradation test, that is, incubate the protein at 37°C for 48h, and no obvious degradation and precipitation were observed. The loss rate is less than 5% within the expiration date under appropriate storage condition.

[IDENTIFICATION]

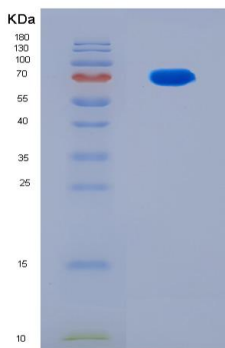


Figure 1. SDS-PAGE

[IMPORTANT NOTE]

The kit is designed for in vitro and research use only, we will not be responsible for any issue if the kit was used in clinical diagnostic or any other procedures.