

Recombinant Human Leucine-Rich Repeat-Containing Protein 25(LRRC25)

Catalog No.: TP06034

50µg

Sequence Information

Species: Human

Gene ID:126364

Swiss Prot:Q8N386

Synonyms: Leucine-rich repeat-containing protein 25; Monocyte and plasmacytoid-activated protein; MAPA; FLJ38116; UNQ6169/PRO20174

Residues:Leu21-Thr165

LEPSCTVSSADVDWNAEFSATCLNFSGLSLSLPHNQSLRASNVILLDLSGNGLR
ELPVTFFAHLQKLEVLNVLNRNPLSRVDGALAARCDLDLQADCNCALESWHDIRR
DNCSGQKPLLCWDTTSSQHNLSAFLEVSCAPGLASAT

Product Information

Source: Eukaryotic expression.

Host: 293F cell

Tags: C-terminal His-Tag

Subcellular Location: Membrane.

Purity: >95%

Traits: Freeze-dried powder

Buffer formulation: PBS, pH7.4, containing 0.01% SKL, 1mM DTT, 5% Trehalose and Proclin300.

Original Concentration: 1000µg/mL

Applications: Positive Control; Immunogen; SDS-PAGE; WB.

(May be suitable for use in other assays to be determined by the end user.)

Predicted isoelectric point: 4.6

Predicted Molecular Mass: 16.7kDa

Accurate Molecular Mass: 17kDa as determined by SDS-PAGE reducing conditions.

[USAGE]

Reconstitute in ddH₂O to a concentration of 0.1-0.5 mg/mL. Do not vortex.

[STORAGE AND STABILITY]

Storage: Avoid repeated freeze/thaw cycles.

Store at 2-8°C for one month.

Aliquot and store at -80°C for 12 months.

Stability Test: The thermal stability is described by the loss rate. The loss rate was determined by accelerated thermal degradation test, that is, incubate the protein at 37°C for 48h, and no obvious degradation and precipitation were observed. The loss rate is less than 5% within the expiration date under appropriate storage condition.

[IDENTIFICATION]

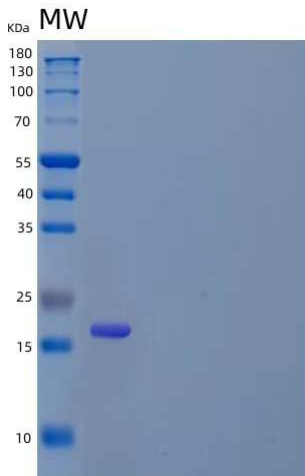


Figure 1. SDS-PAGE

[IMPORTANT NOTE]

The kit is designed for in vitro and research use only, we will not be responsible for any issue if the kit was used in clinical diagnostic or any other procedures.