

Recombinant Prolactin (PRL)

Catalog No.: TP11775

100µg

Sequence Information

Species: Rat

Gene ID: 24683

Swiss Prot:P01237

Synonyms:LTH; Luteotropic Hormone

Residues:Leu30-Cys226

LPVCSGGDCQTPLPELFDREVMLSHYIHTLYTDMFIEFDKQYVQDREFIAKAIN
DCPTSSLATPEDKEQAQKVPPEVLLNLILSLVHSWNDPLFQLITGLGGIHEAPD
AIISRAKEIEEQNKRLLEGIEKIIISQAYPEAKGNEIYLVWSQLPSLQGVDEESK
DLAFYNNIRCLRRDSHKVDNYLKFLRCQIVHKNNC

Product Information

Source: Recombinant expression.

Host: *E.coli*

Tags: N-terminal His-Tag

Subcellular Location: Secreted.

Purity: >90%

Traits: Freeze-dried powder

Buffer formulation: PBS, pH7.4, containing 0.01% SKL, 1mM DTT, 5% Trehalose and Proclin300.

Original Concentration: 200µg/mL

Applications: Positive Control; Immunogen; SDS-PAGE; WB.

(May be suitable for use in other assays to be determined by the end user.)

Predicted isoelectric point: 4.9

Predicted Molecular Mass: 25.9kDa

Accurate Molecular Mass: 26kDa as determined by SDS-PAGE reducing conditions.

[USAGE]

Reconstitute in ddH₂O to a concentration of 0.1-0.5 mg/mL. Do not vortex.

[STORAGE AND STABILITY]

Storage: Avoid repeated freeze/thaw cycles.

Store at 2-8°C for one month.

Aliquot and store at -80°C for 12 months.

Stability Test: The thermal stability is described by the loss rate. The loss rate was

determined by accelerated thermal degradation test, that is, incubate the protein at 37°C for 48h, and no obvious degradation and precipitation were observed. The loss rate is less than 5% within the expiration date under appropriate storage condition.

[IDENTIFICATION]

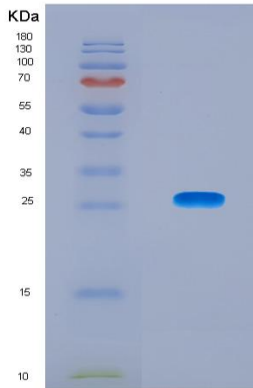


Figure 1. SDS-PAGE

[IMPORTANT NOTE]

The kit is designed for in vitro and research use only, we will not be responsible for any issue if the kit was used in clinical diagnostic or any other procedures.